

CENTRAL LUTHERAN MESSENGER

1604 W. Yakima Avenue,
Yakima, WA 98902 (509) 575-6490
office@clcyakima.org · www.clcyakima.org
Pastor Kathleen Anderson

VOLUME 72 Number 9

September 2022



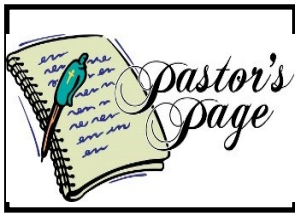
WELCOME



October Messenger Deadline is
September 27, 2022

Please e-mail your articles to
Central Lutheran Church

Lea.Ramirez@clcyakima.org



Soon, too soon for some of us, we will settle into the fall, looking forward to all the upcoming holidays, seeking opportunities for service, and making plans. Here we are, one big happy family-like unit, but in reality a family of disciples who are charged to proclaim the love of God to the world in word and in action.

In the gospels, Jesus teaches us what it means to be his disciples. And it may not be quite what we expect. I think most of us are at an age where we've realized that this life isn't easy, and that sometimes it's downright difficult. Now Jesus tells us exactly how difficult it can be.

"Whoever comes to me and does not hate father and mother, wife and children, brothers and sisters, yes, and even life itself, cannot be my disciple."

Whoa, whoa, whoa. Back up the truck. What was that? Could Jesus possibly really have said the H word? If he did, why? Hate, after all, is a pretty strong word.

A strong word, yes, but we use it often, almost as often as we use—or misuse—the word "love." I hate math. I hate this traffic. I hate when that happens. I hate being young. I hate being old. I hate anyone who disagrees with me or who thinks differently from how I think. I hate when something or someone challenges my comfort zone. We humans have a habit of projecting our own fears and prejudices onto God assuming that something, or someone, we hate or fear, is something, or someone, that God also hates. There is an astute meme floating around the internets that says, "You can safely assume you've created God in your own image when it turns out that God hates all the same people you do." But hatred is not the message of the Bible. If all we've learned after 2,000 years of reading the Bible is that God hates anyone who's not white, male, heterosexual, fiscally responsible, politically and theologically conservative, smells clean, is addiction free, and owns his own home, then we really need to dig deeper into scripture and find the real message.

And yet Jesus says that we are not able to be his disciples unless we hate everyone, and probably everything, that we thought we were supposed to love. So much for being the great preacher on love, I guess. What can he possibly mean?

In case you hadn't noticed it yet, scripture, and the gospels, especially, use exaggerated language in order to make a point, just like we do on occasion. Sometimes we use hyperbole to make a story more interesting or funnier or to emphasize its importance. There are lots of ideas and theories about what Jesus says here that are floating around the ether, but here's one that makes sense to me. He's using a startlingly strong word to grab peoples' attention and to emphasize its opposite, because what he's really talking about here is love. And how is Jesus talking about love by using the word hate?

Let's flash back for a moment to the first commandment of the decalog. Remember when Moses brought the stone tablets down from Mt. Sinai? Remember that first statement: You are to have no other gods before me.

But we're not talking about gods here, I hear you insisting. We're talking about family, parents, siblings, ME. Other gods are things, deities, entities, not people.

Luke is making his point again, and this time more bluntly than he's done before. Usually, he urges us only to give up our possessions, to let go of whatever stuff we have, especially money, that gets in the way of our relationship with Jesus. Now, he ups the ante by telling us that God is to be the absolute center of who we are, the focus of our life, and if our other relationships get in the way, then we need to think about that. Nothing, NOTHING—and no one—deserves our love and devotion more than God does. And if we love home and family, children, spouse, siblings more than we love God or to the exclusion of God—then we are not able to follow Jesus. And if we're not able to follow Jesus, then what are we doing here? What are we about? Because who among us actually will give up everything? It's hard enough to clean out the closet for a garage sale, let alone give away everything we own, everything that we might feel expresses who we are to the world. And who's going to deliberately give up their family? Humans are drawn into community; it's our nature. We want someone tangible to love and someone tangible who loves us, someone with whom we can interact. I think Jesus is recognizing the importance of our relationships with one another when he speaks of

the cost of discipleship. As important as these relationships are to you, with your wife or husband, your children, your brothers or sisters, in case you hadn't noticed it yet, scripture, and the gospels, especially, use exaggerated language in order to make a point, just like we do on occasion. Sometimes we use hyperbole to make a story more interesting or funnier or to emphasize its importance. There are lots of ideas and theories about what Jesus says here that are floating around the ether, but here's one that makes sense to me. He's using a startlingly strong word to grab peoples' attention and to emphasize its opposite, because what he's really talking about here is love. And how is Jesus talking about love by using the word hate?

Let's flash back for a moment to the first commandment of the decalog. Remember when Moses brought the stone tablets down from Mt. Sinai? Remember that first statement: You are to have no other gods before me.

But we're not talking about gods here, I hear you insisting. We're talking about family, parents, siblings, ME. Other gods are things, deities, entities, not people.

Luke is making his point again, and this time more bluntly than he's done before. Usually, he urges us only to give up our possessions, to let go of whatever stuff we have, especially money, that gets in the way of our relationship with Jesus. Now, he ups the ante by telling us that God is to be the absolute center of who we are, the focus of our life, and if our other relationships get in the way, then we need to think about that. Nothing, NOTHING—and no one—deserves our love and devotion more than God does. And if we love home and family, children, spouse, siblings more than we love God or to the exclusion of God—then we are not able to follow Jesus. And if we're not able to follow Jesus, then what are we doing here? What are we about? Because who among us actually will give up everything? It's hard enough to clean out the closet for a garage sale, let alone give away everything we own, everything that we might feel expresses who we are to the world. And who's going to deliberately give up their family?

Humans are drawn into community; it's our nature. We want someone tangible to love and someone tangible who loves us, someone with whom we can interact. I think Jesus is recognizing the importance of our relationships with one another when he speaks of the cost of discipleship. As important as these relationships are to you, with your wife or husband, your children, your brothers or sisters, your parents, friends, whoever you call family—as vital as these relationships are to you in life, none of them are as vital, none of them are as life-giving as your relationship with God. If you can't see these relationships as secondary, then don't bother. You are unable to follow Jesus.

That sounds harsh, but it does make both Luke's and Jesus' point. Everything we have and everything we are comes from God and exists for the glory of God. Without God we are nothing, just a bunch of nuts rattling around in a can with no purpose, trapped in a space that we can't get out of on our own.

But Jesus escalates the discipleship call even more in the next sentence. If you're not able to carry your cross, he continues, you're not able to be my disciple.

We often hear people say about one thing or another, for example, a difficult family member or a disease or a troublesome child, "Oh, that's my cross to bear in life." Please allow me to disabuse you of that notion. Think about what the cross of Jesus was: an instrument of extreme torture and death that God turned into a symbol of life and hope. Moreover, the sins of humanity were crucified on that cross with Jesus. Sin is supposed to no longer have any power over us. No unlucky circumstances, or illness, or whatever we can come up with, and certainly no other human being, should be compared to that cross. Hardships and difficulties in life are part of life, they're not going to be the means of torture or painful death for anyone. If you think about it, it's a horrible thing to say because it diminishes what Jesus did for us.

In Greek, this cross that Jesus says we are to carry definitely belongs to the one carrying it. So at least in one sense, we carry the cross of Jesus, because it is God's promise to us of life and hope. It's the symbol of God's liberating us from the power of sin, death, and the devil. But we don't carry it to the hill of Golgotha for our execution. Jesus has already done that for *his* execution. This cross is one we carry out into the world, to proclaim the good news of the life, death, and

resurrection of Jesus to everyone. It's a symbol of selflessness, of serving other people. The cross-shaped life we live of serving God and serving others is what makes us who and what we are: servants of one another, beloved by God, disciples who follow Jesus wherever he leads. It's who we are, because once we're baptized we carry the mark of that cross on our forehead for the rest of our life.

Peace,
Pastor Anderson



Worship Assistants needed for September 9am Worship:

Reader: contact Kirsten Monick

Ushers: contact Rick Rodden

Altar and Communion: contact Mary Johnson

Sign up for Greeters in the Narthex

Be sure to check for Coffee and Treats sign up

Also, if anyone would like to run the sound system or livestream please contact Ken Toop or Duane Monick.

Committees are always looking for new members. If you would like to join a committee please contact the office, (509) 575-6490.

If you would like to help with the I am Worship in the Fellowship Hall please contact Felicity Pittman.



I'm lucky enough to get to write for the Messenger just before we get started in fall activities! It is an exciting time at Central Lutheran as fall activities and programs get started. Council had a good brainstorming session at our last meeting. We're looking forward to the new school year; what is most needed is commitment and excitement from all of YOU. It's been a long haul as we prayerfully search for just the right person to lead us forward. We've used the ship analogy recently. If God is our Captain, a new pastor might be like the First Mate, but we are the crew. The ship won't move ahead without the crew manning the oars and working together in cadence. If we've been floundering since Covid maybe, we aren't manning our oars. SO! Starting September 11, God's work Our Hands. There are several projects lined up, from knitting prayer shawls to packing bags for kids to bringing canned goods for the food drive. I personally, had so much fun at the potluck in May that a potluck on the 11th is highly anticipated. Bring your own table service and a good appetite. We suggest that if your last name begins with A-H you bring a main dish, I-O bring a dessert, and P-Z bring a salad. Let's kick off the year and have fun together and anticipate great things!

I get nagged by thoughts every now and then that can only be God wishing I'd listen for a change. A couple of weeks ago it was to ask council to join me in corporate prayer at noon every day. If we all pray together, wherever we are, that the right person will see our MSP and feel like Central would be the perfect place for them to serve in ministry, amazing things might happen. And pray that our call committee be open to God's guidance as they receive information from a prospective pastor and that they make the right choice for Central. This is probably our most important job in calling a pastor, so please join the council, the call committee, and God's family at the corner of 16th and Yakima Avenue asking God for His help and guidance.

We so hope to see you at church, participating not only in service but in upcoming programs and activities as we show God's love and guidance. See you in church! Karen

“Celebrating Central”



1st Lynn Buchanan

3rd Mark Roehr, Sophia Ancira, Shane Pierone

5th Robert Good, Joshua Meiser

6th Laura Gillespie, Ryan Chapman, Naomi Rottman

9th Joanne Puyear, Sierra Rodriguez, Kathy Buckingham

10th Emma Christianson

13th Ron Loyd, Joan Harrison

15th Gerry Gilyard

17th Izaiah Rodriguez

18th Anne Gatton

20th Jaelynn Durels

22nd Selma Umbarger

23rd Von Steinhilb

24th Duane Monick, Patty Mathews-Nelson

28th Eunice Koeppe

29th Elliott Bishop

30th Brian Dixon



SEPTEMBER ANNIVERSARIES

7th Lynn and Connie Buchanan

10th Brian and Kyle Dixon

12th Tim and Ann Reiersen

15th Jeff and Patty Roll, Bruce and Ann Willis

17th Pat and Dick Ackley

21st John and Tracey Durels

27th Laura and Jeff Gillespie

30th Rick and Maureen Nygard



**Felicity Pittman at Church Wide with Region I
Bishops and Vice Presidents in Ohio**

**11 am worship
will resume on
September 11th
in our
Fellowship Hall**

**All are welcome
to join us as we worship
around tables in a casual
setting while staying true to
Lutheran liturgy.***

***In Greek liturgy means “work of the people”**



IN OUR
Thoughts and Prayers

Phyllis Gillihan (Ponderosa)

Chet Hausken (Landmark)

Art Ries (Livingcare)

Toni Perschke (Brookdale)

Betty Douglas (Moxee)

Wilma Aspevig (Lives with daughter)

Doris Benish (Orchard Park)

Marie Halverson (Yakima)

Kyle Dixon (Yakima)

Elaine Bueling (Covenant House)

Joanne Puyear (Arbor House)

Carol Nelson (Yakima)

Greg Bainter (Yakima)

Tim Schulz (Yakima)

Dave Desmarais (Ria Desmarais' Husband Good Sam)

Donald Breshears (Anne Chapman's Dad)

Barbara Breshears (Anne Chapman's Mom)

Chris DeMonbrun (Friend of Anne Chapman)

Mickael Benson (Heart surgery Swedish Hosp.)


Don Adams (Toni Lynn Adam's Grandpa in Cowiche)

Lindsey Nelson (Naches)

Kai Perala (Norma's Grandson)

**PLEASE CONTACT BARB BEEHLER IF YOU WOULD
LIKE TO BE A MEMBER OF THE PRAYER CHAIN**

September

Sunday	Monday	Tuesday
		
4 13th Sunday after Pentecost 9:00 am HOLY COMMUNION	5 Labor Day	6
11 14th Sunday after Pentecost 9:00 am HOLY COMMUNION 11:00 am WORSHIP SERVICE GOD'S WORK OUR HANDS AND POTLUCK Patriot Day and Grandparents Day	12 6:00 p Property Committee	13
18 15th Sunday after Pentecost 9:00 am HOLY COMMUNION 11:00 am WORSHIP SERVICE	19 6:30 p Church Council	20 3:00 p OTC
25 16th Sunday after Pentecost 9:00 am HOLY COMMUNION 11:00 am WORSHIP SERVICE	26	27 3:00 p OTC

2022

Wednesday	Thursday	Friday/Saturday
	1 9:00 a Piecemakers	2
		3
7 6:30 p Handbells	8	9
		10
14 4:00 p Youth Group 6:30 p Handbells	15 9:00 a Piecemakers 3:00 p OTC	16
		17 Citizenship Day
21 4:00 p Youth Group 6:30 p Handbells	22 3:00 p OTC 1st Day of Fall	23
		24
28 4:00 p Youth Group 6:30 p Handbells	29 3:00 p OTC	30 Movie Night 6pm 

“God’s work. Our hands.” Sunday



JOIN US
for a
day of service

September 11th, 2022

Projects Planned to date and items needed:

- 1. Food drive for Salvation Army**
*Any canned food needed
- 2. Knitted Prayer Shawls**
*Yarn available

- 3. Bags for the children at Children Village**
*We’ll put them together at the potluck.

***Piecemakers are making small pillows or if anyone would like to make small quilts they have the squares already cut. We have beanie hats, and bags to put everything in for 25 bags.**

If you have any other ideas for the children, please bring them!

If you have any items please bring them to the Narthex!

We're back!

If you missed it, our potluck last May was great! Everything a potluck should be—good food, good friends, good conversation. So let's do it again! September 11th, the first Sunday of the school year, with lunch at 12:00pm, in the Fellowship Hall.

This time we suggest A-H bring a main dish, I-O bring desserts, and P-Z bring a salad. Remember your own table service, juice and coffee will be provided. Let's have an amazing turnout as we greet friends and make new friends.

See you there!

Projects will also be set up for God's Work Our Hands!



Potluck





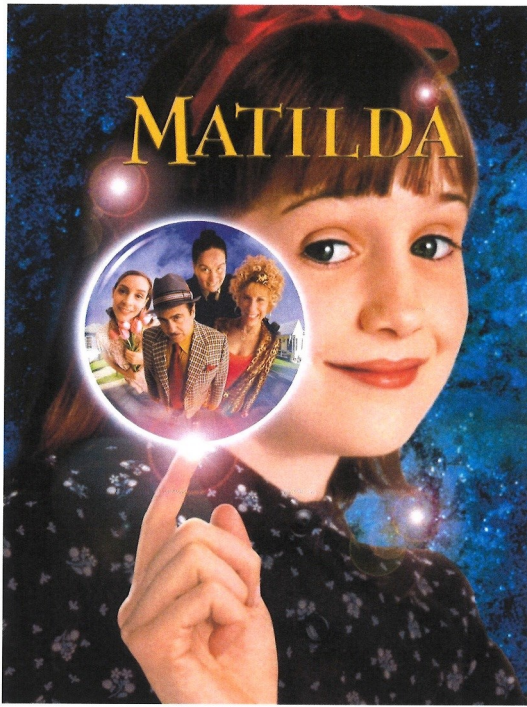
**YOUTH GROUP
IS STARTING
BACK UP ON
SEPTEMBER 14TH!**

**4-6PM IN THE
MULTIPURPOSE ROOM**



September OTC Newsletter

Greetings and God's blessings to you, Central Lutheran Congregants! On The Corner is gearing up for the new school year session, and will begin hosting students again on Thursday, September 15th. We're excited to be bringing back our returning kids, some from last year, and some new ones who participated in our summer camp. Days will still be Tuesdays and Thursdays from 3pm-6pm. All our volunteers from last year will be returning, and we couldn't be more thrilled to get back to fun and educational activities with our kids. God's work continues at Central with its ministries in our community. This work would be so much harder without the generous financial help from some of our community partners like United Way of Central Washington, and the Fresh Hop Group. Fresh Hop's big annual fundraiser, the Fresh Hop Ale Festival will be happening on Saturday, October 8th at SOZO Sports here in Yakima. I have volunteered for this event in the past and have always had more fun volunteering than as just an attendee. I know the Fresh Hop Group is looking for more volunteers and I'm happy to help our community partners find the assistance they need as they assist us. More details can be found on their website, <https://freshhopalefestival.com>



Movie Night

Join us for this family friendly movie in our,
**Central Lutheran Church,
Fellowship Hall on
September 30th at 6pm.**
Children, and adults, are welcome
to come dressed in your
comfy clothes or pajamas!



**Free
6-7:30pm**

Sweet and bright little Matilda Wormwood, a child of wondrous Intelligence, is different from the rest of her family. Misunderstood by everyone and ignored at home, she escapes into a world of reading, honing her skills, and exercising her mind so much that she develops telekinetic powers. -IMDb

Rated PG



Central Lutheran Church
Fellowship Hall
1604 W Yakima Ave
Chestnut Entrance
CVLI #504218490



BRING A FRIEND TO CHURCH!

October 2nd, 2022

Invite a family member, friend , or
neighbor to the 9 am or 11 am
Worship at Central Lutheran Church.
Bring as many as you would like!



18 August 2022

Open letter to Central Lutheran Church Choir members: former, current or prospective:

We are closing in on the end of Summer, and it is time to resume choir. I look forward to this year of singing. I fervently hope you can join us.

I'm trying something different this year. We'll have two seasons of choir- Christmas and Easter.

Here's how it will work:

Christmas Choir

Rehearsals for Christmas Choir begin on Wednesday, October 5 at 7:30 PM. Rehearsals continue every Wednesday until December 21. We will sing Sunday October 30 (Reformation Sunday), November 13 (Christ the King Sunday), November 20 (Advent begins), 27, December 11, 18, and 25 (Christmas). There will certainly be adjustments to this plan; for instance, bell choir may play for one Sunday, or there may be a Christmas Eve service.

Easter Choir

Rehearsals for Easter Choir begin on Wednesday, Feb 1 and continue until April 5. We should sing March 5 (Transfiguration Sunday), each Sunday of Lent, April 2 (Palm Sunday), April 7 (Good Friday), and April 9 (Easter). This plan will most certainly change slightly.

My hope is, with busy schedules, we can know in advance the shortened choir rehearsal and performance dates and thus be able to commit more clearly. If you can commit to one season, but not the other, that is fine. I really encourage you, if you have not sung with us before, or have not sung for some time, to join us. There is nothing better than singing in a choir.

If you have more questions, please contact me:

Sincerely, Bart Roderick

509.830.6976

bartroderick@charter.net

Hand Bells meet Wednesdays at 6:30 pm in the Bell Room, 209.
Contact Bart if interested in joining.

CHURCH IN SOCIETY

Got Gas?

Gas prices are coming down, but are still astronomical...or are they? First be thankful, for the fact that the United States pays gas prices in the bottom half of global gas charges, and by far the lowest of all economically developed nations. Want cheaper gas? Try Nigeria, Iran, Libya, Syria.... maybe not such a good trade off?

Saving money on gas is a win-win as we are helping our own budgets while we help the environment.

Tips for saving:

Drive less. Besides walking, biking, and using public transportation think socializing. Call a friend to say, "Hey, I am driving out to Costco. Need me to pick up anything, or want to come along with your own list?" More time to chat, fewer cars on the road, and gas savings, too.

Organize to combine your errands to use your fuel and your time most efficiently.

Drive Calmly and consistently. Aggressive starts, rapid acceleration, and frequent breaking can use up to 40% more fuel. Using your cruise control helps save gas as it keeps you consistent.

Take Care of your Car. Especially tire pressure makes a big impact on gas mileage. Tire pressure, which changes due to increases or decreases in temperature, can influence mileage by up to 3%. Having your vehicle properly maintained can improve mileage by 4%.

Turn off Air. Air conditioning uses more of your fuel, so if you can get by with the fan, or an open window you will save on gas.

A typical car can produce 5 tons of CO₂ each and every year (with much variation between vehicles and practices). It is a good incentive to use less gas to help ourselves save money, while we help the environment as well.



Treasurer's Report
Financial results thru

July 31, 2022

	Offerings/income		Expenses by major category	
	July	Year to date	July	Year to date
General fund	19,554.02	172,110.60	Salaries & benefits	19,813.05
Building Usage	165.00	1,105.00	Youth & Family	2,554.97
other income	-	896.20	Worship	181.25
Transfers	-		Hospitality	-
from endowment fund		51,801.42	Stewardship/Church in Society	277.35
from money market	718.83		Property	5,891.89
Gertie Hein - Visitation		-	Office	1,113.04
Total	20,437.85	225,913.22	Total	29,831.55
	July 2022		operating loss, net of transfers	\$ (10,112.53)
			net loss	\$ (9,393.70)
		Year to date	operating income, net of transfers	\$ (98,548.40)
			net loss	\$ (46,746.98)

Tim Franks:
8/15/22 Still waiting for \$22,163 from endowment

CHURCH  COUNCIL

President Melissa Christianson (509) 952-8435

melissachristianson@live.com

Vice President MacKenzie Bond (509) 834-3452

karnmackenzie@gmail.com

Secretary Shane Pierone (509) 654-8465

shane@bbold1.com

Treasurer Tim Franks (509) 952-9908

timf@hcyakima.com

Pastor Kathleen Anderson (206) 719-5302

Pastorpkanderson@clcyakima.org

Ron Burkhardt (509) 453-4429

ron.burkhardt42@gmail.com

Melissa Falk (509) 307-2785

lissy.1109@hotmail.com

Karen Baken (509) 952-1280

klbaken@gmail.com

Felicity Pittman (509) 594-2666

felicity.pittman@clcyakima.org

Chris Svendsen (509) 949-6707

csvendsen8327@chater.net

Jennifer Crane (509) 424-7815

jennifer21crane@yahoo.com

Kirsten Monick (509) 494-3858

kmonick@charter.net

We

R E M E M B E R

